

**VON WILLEBRAND DISEASE
EXON 20 TEST KIT
(R852Q/R854W/R854Q/C858F)**

This kit provides the components needed to detect the Von Willebrand polymorphisms 2805G-A, 2810C-T, 2811G-A and 2823G-T in the VWF gene (Chromosome 12p13.3) resulting in Arg852Gln, Arg854Trp, Arg854Gln and Cys858Phe substitutions respectively.

Store at -20°C

For in vitro use only



Issue date: February 2006

Heteroduplex Analysis

Heteroduplex Analysis, Innovation Centre, Innovation Way, York, YO10 5DG, United Kingdom

Tel: +44 (0)1904 435263

Fax: +44 (0)1904 435261

e-mail: enquiries@heteroduplex-analysis.com

Website: www.heteroduplex-analysis.com

1. PRINCIPLE

Heteroduplex Analysis Test Kits contain DUPLEXER™ reagents. These are synthetic oligonucleotides that mimic naturally occurring gene segments of human DNA, but their structures may be manipulated and defined.

When amplified gene segments derived from human genomic DNA and the DUPLEXER™ reagent are mixed the resultant heteroduplexes possess unique 3-D structures specific to a particular genetic allele.

The genotype of clinical samples may be determined by comparison of the electrophoretic mobility patterns of heteroduplex bands from test DNA with control DNAs provided with the kit.

There are three main stages involved in distinguishing between wild homozygous, mutant homozygous and heterozygous alleles;

1. Amplification of Control DNAs, DUPLEXER™ and test genomic DNA in a PCR reaction.
2. Crossmatching of the DUPLEXER™ PCR product with the PCR products from the control and test DNAs.
3. Separation of the resulting heteroduplexes by polyacrylamide gel electrophoresis or other appropriate acrylamide based electrophoretic separation technique.

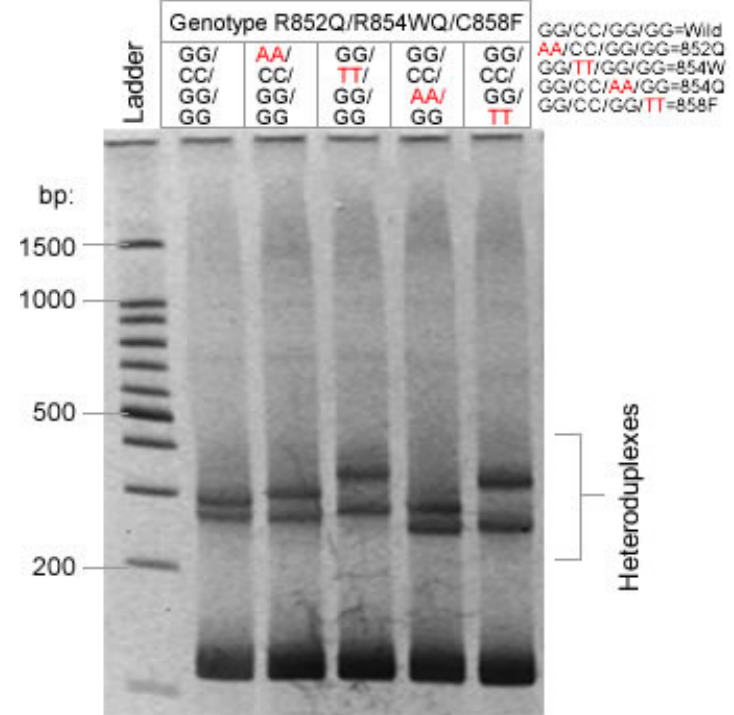
The principle of genotyping using DUPLEXER™ reagents is fully outlined on the Heteroduplex Analysis web site. It is recommended that the user studies the principle and examples provided on the web pages if unfamiliar with DUPLEXER™ technology.

CAUTION

DUPLEXER™ reagent is more easily amplified than genomic DNA. To minimise cross contamination ALWAYS open the DUPLEXER™ tube after completing the set-up of the rest of your PCR reaction tubes.

Heteroduplex Analysis

STEP 4: Analysis of the Stained Gel



Genotypes of clinical samples may be determined by comparison of electrophoretic mobility patterns of heteroduplex bands with the control genomic DNAs provided with the kit.

The patterns are;

- Homozygous wild type DNA (GG/CC/GG/GG)
- Homozygous 852Q mutated or polymorphic DNA (AA/CC/GG/GG)
- Homozygous 854W mutated or polymorphic DNA (GG/TT/GG/GG)
- Homozygous 854Q mutated or polymorphic DNA (GG/CC/AA/GG)
- Homozygous 858F mutated or polymorphic DNA (GG/CC/GG/TT)

Heteroduplex Analysis

STEP 3: Electrophoresis of Heteroduplexes

Electrophoresis may be performed in a range of electrophoresis equipment:

Large format gel (Nominal length 16cm)

- 15% (37.5:1) non-denaturing polyacrylamide gel
- 1x TBE running buffer
- Constant voltage of 500V
- Gel cooling to maintain a temperature of 10-15°C. Cold tap water cooling is sufficient

Midi format gel (Nominal length 9cm)

- 15% (37.5:1) non-denaturing polyacrylamide gel
- 1.5x TBE running buffer
- Constant voltage of 300V
- Gel cooling to maintain a temperature of 10-15°C. Cold tap water cooling is sufficient

An appropriate molecular weight marker, for example a 100 base pair ladder, should be included.

An appropriate amount of gel loading buffer should be added to each crossmatch reaction before loading the complete reaction mixture onto the gel. We recommend a gel loading buffer containing xylene cyanol.

For good resolution of heteroduplexes gels should be run until the xylene cyanol marker reaches the bottom of the gel.

Gels may be stained using ethidium bromide or SYBR Green.

NOTE: Heteroduplex Analysis kits may also be used in conjunction with most other acrylamide-electrophoretic based separation techniques.

Heteroduplex Analysis

2. KIT CONTENT

The Von Willebrand Exon20 Test Kit contains sufficient reagents for 10 tests.

Clear cap	'Buffer'
White cap	'VWF ex20 Test'
Green cap	'VWF ex20 DUPLEXER'
Red cap	'VWF ex20 Wild'
Yellow cap	'VWF ex20 Mutant 852Q'
Black cap	'VWF ex20 Mutant 854W'
Orange cap	'VWF ex20 Mutant 854Q'
Blue cap	'VWF ex20 Mutant 858F'

Kits in their lyophilized form may be stored for up to 6 months at -20°C.

Reconstitution of Reagents

Prior to use the lyophilized reagents must be reconstituted by addition of buffer solution as follows;

VWF ex20 Test	Add 264µl Buffer
VWF ex20 DUPLEXER	Add 336µl Buffer
VWF ex20 Wild	Add 336µl Buffer
VWF ex20 Mutant 852Q	Add 336µl Buffer
VWF ex20 Mutant 854W	Add 336µl Buffer
VWF ex20 Mutant 854Q	Add 336µl Buffer
VWF ex20 Mutant 858F	Add 336µl Buffer

The contents of the tubes should be thoroughly mixed by vortexing (10 seconds) and quick spinning at least three times.

Reconstituted reagents may be stored for up to 3 months at -20°C.

NOTE: It is recommended that stored reagents are mixed as above after being thawed completely.

Reagent to be supplied by user

Taq DNA polymerase (0.5 units/µl)

Heteroduplex Analysis

3. DNA SAMPLE PREPARATION

This kit is intended for use with genomic DNA. Samples prepared using commercial DNA purification kits or by phenol/chloroform extraction may be used.

It is recommended that DNA is suspended in DNase-free water although the use of buffers supplied with kits will have no adverse effect.

Samples should be stored at 4°C or at -20°C for longer periods.

Genomic DNA should be diluted to a concentration of 10-100ng/μl before use.

4. PROCEDURE

STEP 1: PCR reaction

Tube	Mix for 1 PCR reaction (μl)					Test DNA	DUPLEXER (*)
	Wild Control	Mutant Control 852Q	Mutant Control 854W	Mutant Control 854Q	Mutant Control 858F		
Red cap	28	-	-	-	-	-	-
Yellow cap	-	28	-	-	-	-	-
Black cap	-	-	28	-	-	-	-
Orange cap	-	-	-	28	-	-	-
Blue cap	-	-	-	-	28	-	-
White cap	-	-	-	-	-	22	-
Patient DNA	-	-	-	-	-	6	-
Green cap	-	-	-	-	-	-	28
Taq (0.5 units/μl)	2	2	2	2	2	2	2

*To run a complete set of controls (without heterozygotes) plus:

1 to 5 DNA tests use 2 DUPLEXER reaction tubes.

6 to 10 DNA tests use 3 DUPLEXER reaction tubes.

If including heterozygotes: 2 DUPLEXER reaction tubes for 1 DNA test, 3 DUPLEXER reaction tubes for 2 to 6 DNA tests, and 4 DUPLEXER reaction tubes for 7 to 10 DNA tests.

Thermal Cycling Parameters;

Initial Denaturation (94°C, 5 min) – 1 cycle

Denaturation (94°C, 30 sec)	} 32 cycles
Primer annealing (67°C, 30 sec)	
Primer extension (72°C, 30 sec)	

Final primer extension (72°C, 5 min) – 1 cycle

If the PCR products are not to be processed immediately store at -20°C.

Heteroduplex Analysis

STEP 2: 'Crossmatching' - Formation of Heteroduplexes

In this step, aliquots of the test DNA and control DNA PCR products are mixed with aliquots of the DUPLEXER™ PCR product. The mixtures are placed in a thermal cycler and subjected to heating and cooling to induce the formation of heteroduplexes, a process referred to as crossmatching. Note: the control heterozygote genotypes are generated by mixing wild control and mutant control PCR products in equal proportions: wild +2805AA to generate hetero 2805GA, wild + 2810TT to generate hetero 2810CT, wild + 2811AA to generate hetero 2811GA and wild + 2823TT to generate hetero 2823GT.

To ensure optimal heteroduplex formation, approximately equal molar amounts of PCR product from the DUPLEXER™ and test DNAs should be used in the crossmatch mixtures. Therefore before crossmatching we recommend testing of each test DNA, control DNA, and DUPLEXER™ PCR product to compare band intensities. This can be easily achieved by electrophoresis of 5μl of each DNA in 15% polyacrylamide gels or 2% agarose minigels.

Adjustment of the PCR product concentration can be made based on visual comparison of the band intensity.

Mix contents of the PCR tubes by briefly vortexing and centrifuging and prepare crossmatch reactions.

Tube	Mix for 1 Crossmatch reaction (μl)						Test DNA
	Wild 2805GG 2810CC 2811GG 2823GG	Mutant 852Q Control 2805AA	Mutant 854W Control 2810TT	Mutant 854Q Control 2811AA	Mutant 858F Control 2823TT	Hetero Wild/852Q 2805GA	
DUPLEXER	5	5	5	5	5	5	5
Wild	5	-	-	-	-	5	-
Control 852Q	-	5	-	-	-	5	-
Control 854W	-	-	5	-	-	-	-
Control 854Q	-	-	-	5	-	-	-
Control 858F	-	-	-	-	5	-	-
Test DNA	-	-	-	-	-	-	5

Thermal Cycling Parameters;

Increase temperature to 95°C, hold for 2 minute
Cool to 60°C at 1°C per second, hold for 1 minute
Cool to 45°C at 0.1°C per second, hold for 1 minute
Cool to 6°C

If the crossmatched products are not to be processed immediately store at -20°C.

Heteroduplex Analysis