

BLOOM SYNDROME 2281 TEST KIT

This kit provides the components needed to detect the Bloom Syndrome polymorphism 2281 (6bp deletion-7bp insertion) in the BLM gene (Chromosome 15q26.1).

Store at -20°C

For in vitro use only



Issue date: January 2006

Heteroduplex Analysis

Heteroduplex Analysis, Innovation Centre, Innovation Way, York, YO10 5DG, United Kingdom

Tel: +44 (0)1904 435263

Fax: +44 (0)1904 435261

e-mail: enquiries@heteroduplex-analysis.com

Website: www.heteroduplex-analysis.com

1. PRINCIPLE

Heteroduplex Analysis Test Kits contain DUPLEXER™ reagents. These are synthetic oligonucleotides that mimic naturally occurring gene segments of human DNA, but their structures may be manipulated and defined.

When amplified gene segments derived from human genomic DNA and the DUPLEXER™ reagent are mixed the resultant heteroduplexes possess unique 3-D structures specific to a particular genetic allele.

The genotype of clinical samples may be determined by comparison of the electrophoretic mobility patterns of heteroduplex bands from test DNA with control DNAs provided with the kit.

There are three main stages involved in distinguishing between wild homozygous, mutant homozygous and heterozygous alleles;

1. Amplification of Control DNAs, DUPLEXER™ and test genomic DNA in a PCR reaction.
2. Crossmatching of the DUPLEXER™ PCR product with the PCR products from the control and test DNAs.
3. Separation of the resulting heteroduplexes by polyacrylamide gel electrophoresis or other appropriate acrylamide based electrophoretic separation technique.

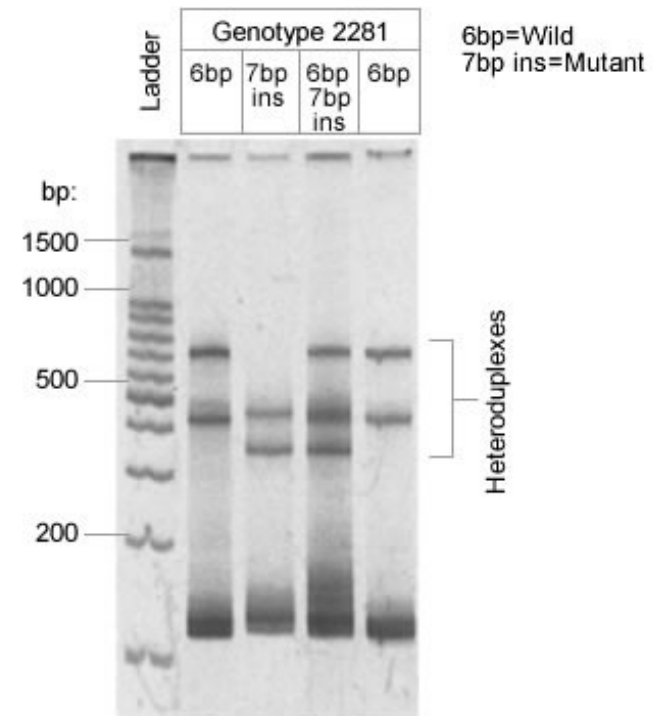
The principle of genotyping using DUPLEXER™ reagents is fully outlined on the Heteroduplex Analysis web site. It is recommended that the user studies the principle and examples provided on the web pages if unfamiliar with DUPLEXER™ technology.

CAUTION

DUPLEXER™ reagent is more easily amplified than genomic DNA. To minimise cross contamination ALWAYS open the DUPLEXER™ tube after completing the set-up of the rest of your PCR reaction tubes.

Heteroduplex Analysis

STEP 4: Analysis of the Stained Gel



Genotypes of clinical samples may be determined by comparison of electrophoretic mobility patterns of heteroduplex bands with the control genomic DNAs provided with the kit.

The patterns are;

- Homozygous wild type DNA (6bp)
- Homozygous mutated or polymorphic DNA (7bp ins)
- Heterozygous wild type plus mutated or polymorphic DNA (6bp/7bp ins)
- Homozygous wild type DNA (6bp)

Heteroduplex Analysis

STEP 3: Electrophoresis of Heteroduplexes

Electrophoresis may be performed in a range of electrophoresis equipment:

Large format gel (Nominal length 16cm)

- 15% (37.5:1) non-denaturing polyacrylamide gel
- 1x TBE running buffer
- Constant voltage of 500V
- Gel cooling to maintain a temperature of 10-15°C. Cold tap water cooling is sufficient

Midi format gel (Nominal length 9cm)

- 15% (37.5:1) non-denaturing polyacrylamide gel
- 1.5x TBE running buffer
- Constant voltage of 300V
- Gel cooling to maintain a temperature of 10-15°C. Cold tap water cooling is sufficient

An appropriate molecular weight marker, for example a 100 base pair ladder, should be included.

An appropriate amount of gel loading buffer should be added to each crossmatch reaction before loading the complete reaction mixture onto the gel. We recommend a gel loading buffer containing xylene cyanol.

For good resolution of heteroduplexes gels should be run until the xylene cyanol marker reaches the bottom of the gel.

Gels may be stained using ethidium bromide or SYBR Green.

NOTE: Heteroduplex Analysis kits may also be used in conjunction with most other acrylamide-electrophoretic based separation techniques.

Heteroduplex Analysis

2. KIT CONTENT

The Bloom 2281 Test Kit contains sufficient reagents for 10 tests.

Clear cap	'Buffer'
White cap	'2281 Test'
Green cap	'2281 DUPLEXER'
Red cap	'2281 Wild'
Yellow cap	'2281 Mutant'

Kits in their lyophilized form may be stored for up to 6 months at -20°C.

Reconstitution of Reagents

Prior to use the lyophilized reagents must be reconstituted by addition of buffer solution as follows;

2281 Test	Add 264µl Buffer
2281 DUPLEXER	Add 336µl Buffer
2281 Wild	Add 336µl Buffer
2281 Mutant	Add 336µl Buffer

The contents of the tubes should be thoroughly mixed by vortexing (10 seconds) and quick spinning at least three times.

Reconstituted reagents may be stored for up to 3 months at -20°C.

NOTE: It is recommended that stored reagents are mixed as above after being thawed completely.

Reagent to be supplied by user

Taq DNA polymerase (0.5 units/µl)

Heteroduplex Analysis

3. DNA SAMPLE PREPARATION

This kit is intended for use with genomic DNA. Samples prepared using commercial DNA purification kits or by phenol/chloroform extraction may be used.

It is recommended that DNA is suspended in DNase-free water although the use of buffers supplied with kits will have no adverse effect.

Samples should be stored at 4°C or at -20°C for longer periods.

Genomic DNA should be diluted to a concentration of 10-100ng/μl before use.

4. PROCEDURE

STEP 1: PCR reaction

Tube	Mix for 1 PCR reaction (μl)			
	Wild Control	Mutant Control	Test DNA	DUPLEXER *
Red cap	28	-	-	-
Yellow cap	-	28	-	-
White cap	-	-	22	-
Patient DNA	-	-	6	-
Green cap	-	-	-	28
Taq (0.5 units/μl)	2	2	2	2

*To run a complete set of controls (including heterozygotes) plus:

1 to 2 DNA tests use 1 DUPLEXER reaction tube.

3 to 7 DNA tests use 2 DUPLEXER reaction tubes.

8 to 10 DNA tests use 3 DUPLEXER reaction tubes.

Thermal Cycling Parameters;

Initial Denaturation (94°C, 5 min) – 1 cycle

Denaturation (94°C, 30 sec)	} 32 cycles
Primer annealing (53°C, 30 sec)	
Primer extension (72°C, 30 sec)	

Final primer extension (72°C, 5 min) – 1 cycle

If the PCR products are not to be processed immediately store at -20°C.

Heteroduplex Analysis

STEP 2: 'Crossmatching' - Formation of Heteroduplexes

In this step, aliquots of the test DNA and control DNA PCR products are mixed with aliquots of the DUPLEXER™ PCR product. The mixtures are placed in a thermal cycler and subjected to heating and cooling to induce the formation of heteroduplexes, a process referred to as crossmatching. Note: the control heterozygote (genotype 6bp/7bp ins) is generated by mixing control 6bp (genotype 6bp) and control 7bp ins (genotype 7bp ins) PCR products in equal proportions.

To ensure optimal heteroduplex formation, approximately equal molar amounts of PCR product from the DUPLEXER™ and test DNAs should be used in the crossmatch mixtures. Therefore before crossmatching we recommend testing of each test DNA, control DNA, and DUPLEXER™ PCR product to compare band intensities. This can be easily achieved by electrophoresis of 5μl of each DNA in 15% polyacrylamide gels or 2% agarose minigels.

Adjustment of the PCR product concentration can be made based on visual comparison of the band intensity.

Mix contents of the PCR tubes by briefly vortexing and centrifuging and prepare crossmatch reactions.

PCR Product	Mix for 1 Crossmatch reaction (μl)			
	Control 6bp	Control 7bp ins	Control 6bp/7bp ins	Test DNA
DUPLEXER	5	5	5	5
Control 6bp (wild)	5	-	5	-
Control 7bp ins (mutant)	-	5	5	-
Test DNA	-	-	-	5

Thermal Cycling Parameters;

Increase temperature to 95°C, hold for 2 minutes

Cool to 60°C at 1°C per second, hold for 1 minute

Cool to 45°C at 0.1°C per second, hold for 1 minute

Cool to 6°C

If the crossmatched products are not to be processed immediately store at -20°C.

Heteroduplex Analysis